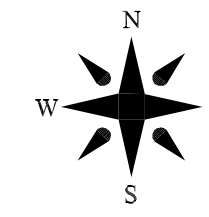
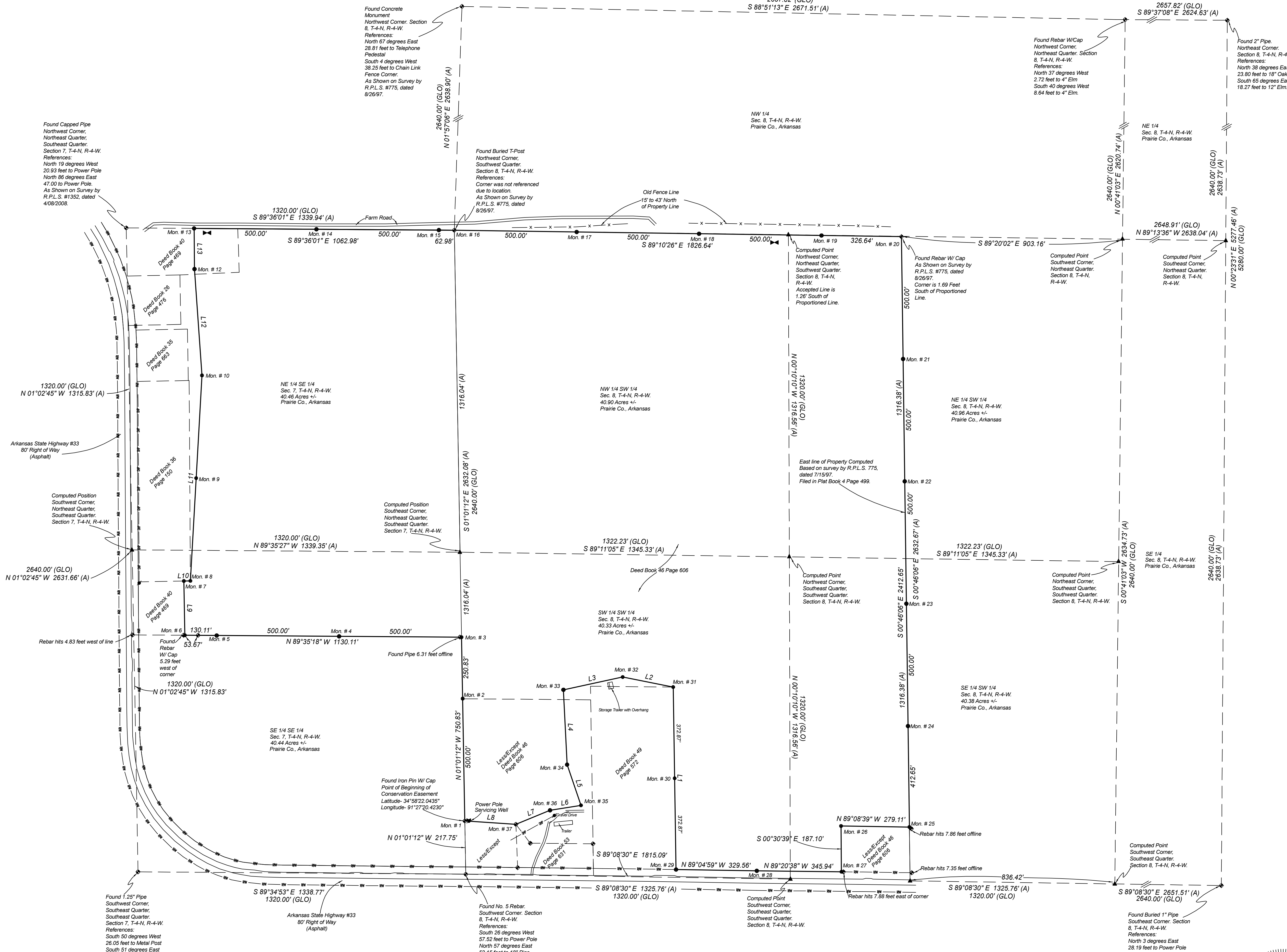


Wetlands Reserve Program Boundary Survey
 Ralph Cawthorn
 Contract No. 66-7103-12-019HK
 Plat Revision Dated 11/4/13



Bearings are based on NAD 83 State Plane Coordinates-Arkansas South with a convergence angle of 00 degrees 18 minutes 10.32643 seconds. Scale factor of 1.000054398. Distances were not converted to ground.



Legal Description:
 Part of the Southwest Quarter of Section 8, Township 4 North, Range 4 West; and part of the Northeast Quarter of the Southeast Quarter and part of the Southeast Quarter of the Southeast Quarter of Section 7, Township 4 North, Range 4 West; all in Prairie County, Arkansas, being more particularly described as follows: Commencing at the Southwest Corner of Section 8, then North 01 degrees 01 minutes 12 seconds West a distance of 217.75 feet along the West line of Section 8 to the Point of Beginning, thence, continuing along said West line, North 01 degrees 01 minutes 12 seconds West a distance of 750.83 feet, then, leaving said West line, North 89 degrees 35 minutes 18 seconds West a distance of 1130.11 feet, then, North 01 degrees 07 minutes 31 seconds West a distance of 221.77 feet, then, North 88 degrees 57 minutes 15 seconds East a distance of 26.69 feet, then, North 03 degrees 13 minutes 58 seconds East a distance of 840.97 feet, then, North 04 degrees 00 minutes 15 seconds West a distance of 435.50 feet, then, North 00 degrees 37 minutes 53 seconds West a distance of 166.26 feet to the North line of the Northeast Quarter of the Southeast Quarter of Section 7, then, along said North line, South 89 degrees 36 minutes 01 seconds East a distance of 1062.98 feet to the Northeast Corner thereof; thence, along the North line of the Southwest Quarter of Section 8, South 89 degrees 10 minutes 26 seconds East a distance of 1826.64 feet, then, leaving said North line, South 00 degrees 46 minutes 06 seconds East a distance of 2412.05 feet, then, North 89 degrees 08 minutes 39 seconds West a distance of 279.11 feet, then, South 00 degrees 30 minutes 39 seconds East a distance of 345.94 feet, then, North 89 degrees 04 minutes 59 seconds West a distance of 329.56 feet, then, leaving said North line, North 00 degrees 54 minutes 31 seconds West a distance of 745.74 feet, then, North 78 degrees 47 minutes 09 seconds West a distance of 210.33 feet, then, South 77 degrees 51 minutes 51 seconds West a distance of 247.78 feet, then, South 02 degrees 49 minutes 05 seconds East a distance of 306.31 feet, then, South 18 degrees 49 minutes 53 seconds East a distance of 175.54 feet, then, South 80 degrees 49 minutes 17 seconds West a distance of 127.86 feet, then, South 67 degrees 38 minutes 33 seconds West a distance of 150.98 feet, then, North 86 degrees 10 minutes 06 seconds West a distance of 208.93 feet to the point of beginning, containing 138.90 acres, more or less.

Monument Table:

Monument Number	Latitude	Longitude
1	34°58'22.0435"	91°27'20.4230"
2	34°58'26.9884"	91°27'20.4860"
3	34°58'29.4688"	91°27'20.5357"
4	34°58'29.5306"	91°27'26.5430"
5	34°58'29.5923"	91°27'32.5504"
6	34°58'29.6084"	91°27'34.1137"
7	34°58'31.8015"	91°27'34.1519"
8	34°58'31.8049"	91°27'33.8312"
9	34°58'35.9557"	91°27'33.5196"
10	34°58'40.1065"	91°27'33.2081"
12	34°58'44.4047"	91°27'33.5459"
13	34°58'46.0490"	91°27'33.5574"
14	34°58'45.9883"	91°27'27.5497"
15	34°58'45.9276"	91°27'21.5420"
16	34°58'45.9199"	91°27'20.7853"
17	34°58'45.8223"	91°27'14.7783"
18	34°58'45.7246"	91°27'08.7713"
19	34°58'45.6268"	91°27'02.7643"
20	34°58'45.5659"	91°26'58.8401"
21	34°58'40.6179"	91°26'58.7918"
22	34°58'35.6730"	91°26'58.7435"
23	34°58'30.7280"	91°26'58.6953"
24	34°58'25.7830"	91°26'58.6470"
25	34°58'21.7020"	91°26'58.6072"
26	34°58'21.7581"	91°27'01.1140"
27	34°58'19.9076"	91°27'01.9521"
28	34°58'19.9651"	91°27'06.1081"
29	34°58'20.0347"	91°27'10.0669"
30	34°58'23.7233"	91°27'10.1140"
31	34°58'27.4098"	91°27'10.1611"
32	34°58'27.8253"	91°27'12.6374"
33	34°58'27.3629"	91°27'15.5514"
34	34°58'24.2963"	91°27'16.3900"
35	34°58'22.6501"	91°27'14.7199"
36	34°58'22.4551"	91°27'16.2378"
37	34°58'21.8944"	91°27'17.5191"

Conservation Easement Area Table:

Section	Area
Section 7	SE 1/4 SE 1/4 - 8.92 Acres
	NE 1/4 SE 1/4 - 32.04 Acres
Section 8	SW 1/4 SW 1/4 - 29.86 acres
	NW 1/4 SW 1/4 - 40.91 acres
	NE 1/4 SW 1/4 - 14.15 acres
	SE 1/4 SW 1/4 - 13.02 acres
Overall Area:	138.90 Acres +/-

LEGEND

These standard symbols will be found in the drawing:

- = Found Rebar W/ Surveyor Cap (unless otherwise noted)
- = Set 5/8" Rebar W/ Aluminum Cap and Witness Post
- ▲ = Computed Point
- (A) = Actual
- (GLO) = General Land Office
- = Power Pole
- = Wire Fence
- = Broken Line
- = Well
- = Overhead Power
- = Computed Deed Line



TWIN CREEKS SURVEYING, L.L.C.

DRAWN BY: A. COOKE	DATE: 11/4/13	P.O. BOX 456 VILONIA, AR 72173
APPROVED BY: A. COOKE	DATE: 11/4/13	PHONE: 501.425.3808 FAX: 501.499.6133
SCALE: 1"=200'	SHEET: NO. 1	STATE CODE: 500-04N-04W-0-07-200-59-1708 500-04N-04W-0-08-300-59-1708

LINE	BEARING	DISTANCE
L1	N 00°54'31" W	745.74'
L2	N 78°47'09" W	210.33'
L3	S 77°51'51" W	247.78'
L4	S 02°49'05" E	306.31'
L5	S 18°49'53" E	175.54'
L6	S 80°49'17" W	127.86'
L7	S 67°38'33" W	150.98'
L8	N 86°10'06" W	208.93'
L9	N 01°07'31" W	221.77'
L10	N 88°57'15" E	26.69'
L11	N 03°13'58" E	840.97'
L12	N 04°00'15" W	435.50'
L13	N 00°37'53" W	166.26'

This is to certify that the survey was done by the undersigned, in accordance with the most recent minimum standards for boundary property surveys as set forth by the Arkansas State Board of Licensure for Professional Engineers and Land Surveyors. The accuracy and position tolerance also are in accordance with rural surveys.

I hereby certify that the above plat represents a survey made by me on this day, and all easements, encroachments, and improvements disclosed by this survey are shown. An independent search for easements, covenants, encumbrances, or any other facts which an accurate title search may disclose was not performed.

Surveyors Notes:

- Javad Triumph-1 RTK GPS was used to perform the survey.
- All distances shown are measured unless otherwise noted.
- The property was surveyed based on deeds provided by the NRCS. Legal descriptions within the conservation easement are plotted and shown.
- The Right of Way for Highway #33 was based on plans provided by the Arkansas Highway Transportation Department.
- This plat supersedes any earlier dated plats.

